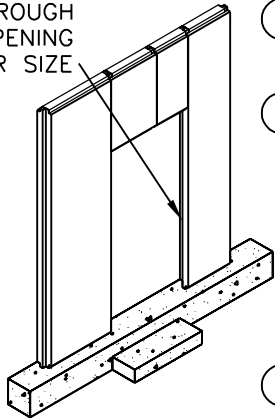


ROUGH
OPENING
DOOR SIZE

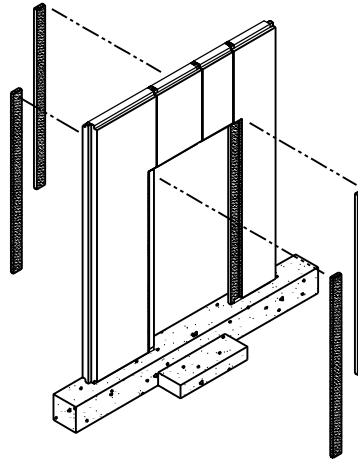


- ① STEP 1:
FIELD CUT FOAM
AS REQUIRED.
- ② STEP 2:
ATTACH S-CLIP
TO SHIP LAP OF
KORETECK PANEL
W/ 1/4"-14 X
3/4" SELF
DRILLING
FASTENERS
@ 1'-0" O.C.

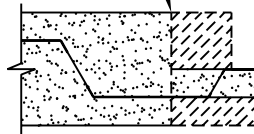
- ③ STEP 3:
ATTACH FIELD 90 TO S-CLIP W/ 1/4"-14 X
3/4" SELF DRILLING FASTENERS @ 1'-0" O.C.
- ④ STEP 4: ATTACH W/D STUD TO HEAD AND
JAMBS W/ 1/4"-14 X 3/4" SELF
DRILLING FASTENERS @ 1'-0" O.C.

NOTE: W/D STUD TO BE FIELD SLIT AND BENT.
MINIMUM 12" EXTENDING FROM CORNER.
MUST OVERLAP ANY PANEL JOINTS.

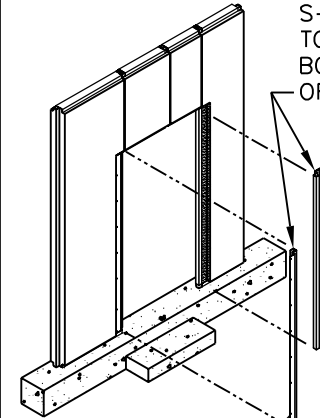
STEP #1
FIELD CUT FOAM



BUILDER NOTE:
FOAM MUST BE CUT
AND REMOVED FROM
THE SIDE OF THE
PANEL WITH THE
LONG LEG OF THE
S-CLIP.
(JUST OVER 4-1/2"
FROM THE END OF
THE SHIPLAP.)



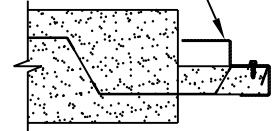
STEP #2
ATTACH S-CLIPS



ATTACH
S-CLIP
TO CORE @
BOTH SIDERS
OF OPENING

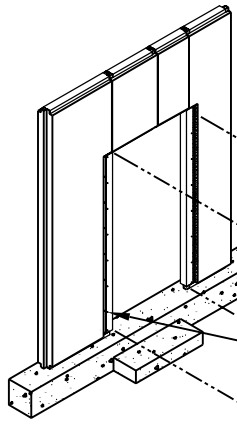
ATTACH S-CLIP

1/4"-14
X 3/4"
SELF
DRILLING
FASTENERS
1'-0" O.C.



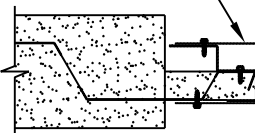
STEP #3

ATTACH FIELD 90



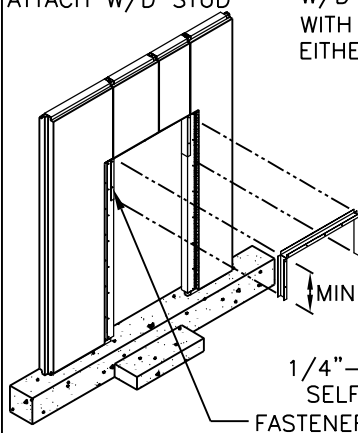
ATTACH
FIELD 90
TO S-CLIP
@ BOTH SIDERS
OF OPENING

ATTACH FIELD 90



1/4"-14 X 3/4"
SELF DRILLING
FASTENERS 1'-0" O.C.

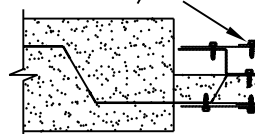
STEP #4
ATTACH W/D STUD



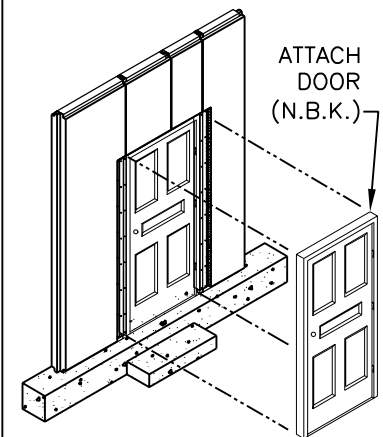
BUILDER NOTE:

W/D STUD TO BE SLIT AND BENT
WITH MIN. 12" EXTENDING FROM
EITHER CORNER.

ATTACH W/D STUD



1/4"-14 X 3/4"
SELF DRILLING
FASTENERS 1'-0" O.C.



ATTACH
DOOR
(N.B.K.)