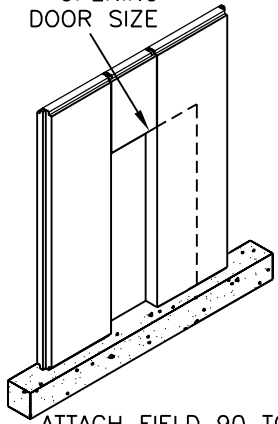


ROUGH
OPENING
DOOR SIZE



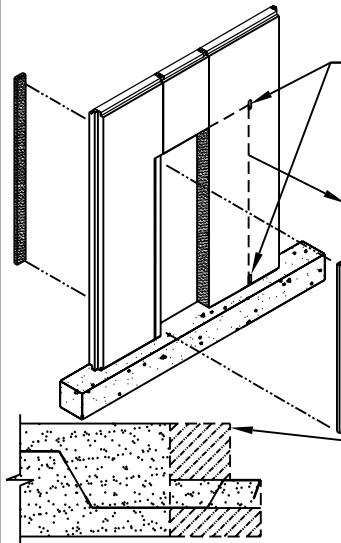
- ① STEP 1:
FIELD CUT FOAM
AS REQUIRED.
- ② STEP 2:
ATTACH S-CLIP
TO SHIP LAP OF
KORETECK PANEL
W/ 1/4"-14 X
3/4" SELF
DRILLING
FASTENERS
@ 1'-0" O.C.

- ③ STEP 3:
ATTACH FIELD 90 TO S-CLIP W/ 1/4"-14 X
3/4" SELF DRILLING FASTENERS @ 1'-0" O.C.

- ④ STEP 4: ATTACH W/D STUD TO HEAD, AND
JAMB W/ 1/4"-14 X 3/4" SELF
DRILLING FASTENERS @ 1'-0" O.C.

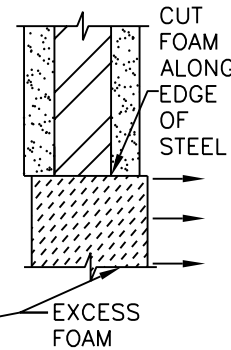
NOTE: W/D STUD TO BE FIELD SLIT AND BENT.
MINIMUM 12" EXTENDING FROM CORNER.
MUST OVERLAP ANY PANEL JOINTS.

STEP #1
FIELD CUT FOAM



BUILDER NOTE:

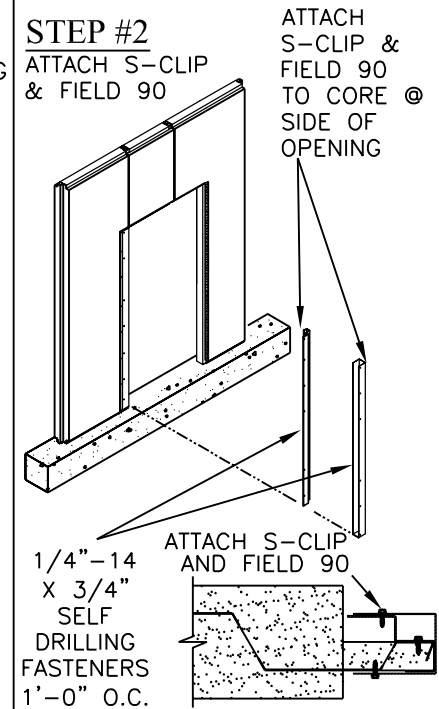
USING THE
PRE-FORMED
HOLES AS
GUIDES, CUT
AWAY FOAM
TO THE EDGE
OF THE PANEL
OPENING



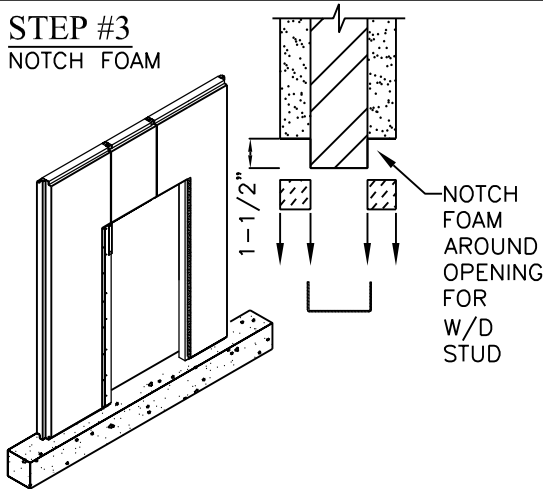
BUILDER NOTE:

FOAM MUST BE CUT
AND REMOVED FROM
THE SIDE OF THE
PANEL WITH THE
LONG LEG OF THE
S-CLIP.
(JUST OVER 4-1/2"
FROM THE END OF
THE SHIP-LAP.)

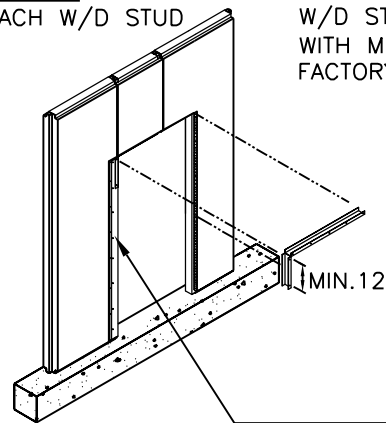
STEP #2
ATTACH S-CLIP
& FIELD 90



STEP #3
NOTCH FOAM

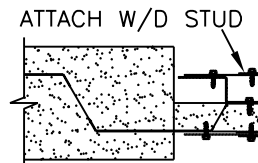


STEP #4
ATTACH W/D STUD



BUILDER NOTE:

W/D STUD TO BE SLIT AND BENT
WITH MIN. 12" EXTENDING FROM
FACTORY CUT CORNER.



1/4"-14 X 3/4"
SELF DRILLING
FASTENERS 1'-0" O.C.

